

Public Document Pack

HAMBLETON
DISTRICT COUNCIL

AGENDA

Committee Administrator: Louise Hancock (01609 767015)

Wednesday, 2 July 2014

Dear Councillor

NOTICE OF MEETING

Meeting **SCRUTINY COMMITTEE**

Date **Thursday, 10 July 2014**

Time **9.30 am**

Venue **Main Committee Room, Civic Centre, Stone Cross, Northallerton, DL6 2UU**

Yours sincerely

P. Morton.

Phillip Morton
Chief Executive

To: Councillors Councillors

 A Wake (Chairman) Mrs I Sanderson

 K Billings Mrs S Shepherd

 Mrs C S Cookman Mrs J Watson (Vice-Chairman)

 Mrs F M Greenwell S Watson

 B Griffiths A W Wood

 G J F Key

Other Members of the Council for information

AGENDA

Page No

1. MINUTES
To confirm the minutes of the meeting held on 5 June 2014 (SC.3 - SC.4), previously circulated.
2. APOLOGIES FOR ABSENCE
3. SAFER HAMBLETON AND RICHMONDSHIRE LOCAL PARTNERSHIP DELIVERY PLAN 2014-15 1 - 24

Report of the Director of Customer and Leisure Services
4. POLICY REVIEW WORK PROGRAMME 2014/15 25 - 26

Report of the Chairman
5. MATTERS OF URGENCY

Any other business of which not less than 24 hours' prior notice, preferably in writing, has been given to the Chief Executive and which the Chairman decides is urgent.

HAMBLETON DISTRICT COUNCIL

Report To: Scrutiny Committee

From: Director of Customer and Leisure Services

Subject: **SAFER HAMBLETON AND RICHMONDSHIRE – LOCAL PARTNERSHIP DELIVERY PLAN 2014-15**

All Wards

1.0 SUMMARY:

1.1 The purpose of the report is to present the Safer Hambleton and Richmondshire Local Partnership Delivery Plan 2014-15.

2.0 INTRODUCTION AND BACKGROUND:

2.1 The Community Safety Partnership is a statutory body including partners from Hambleton District Council, Richmondshire District Council, National Probation Service/Community Rehabilitative Company, North Yorkshire County Council, North Yorkshire Fire and Rescue Service, North Yorkshire Police, Hambleton, Richmondshire and Whitby Clinical Commissioning Group. Together with several partners who can contribute to crime and disorder reduction across Hambleton and Richmondshire.

2.2 The partnership has key priorities defined following the compilation of the Joint Strategic Intelligence Assessment (JSIA):

- Anti-Social Behaviour
- Domestic Abuse
- Road Safety
- Community Engagement, Offender Management & Safeguarding Vulnerable Individuals and Troubled Families

2.3 Whilst the above are the key priorities, the Community Safety Partnership also contributes to other crime and disorder issues, this is reflected in the report.

3.0 RECOMMENDATION:

3.1 Members are asked to consider and make comment on the report.

MICK JEWITT

Background papers: None
Author ref: PW
Contact: Pat Wilson
Community Safety Manager, Richmondshire and Hambleton
Ext: 7176

NOT PROTECTIVELY MARKED

SAFER HAMBLETON AND RICHMONDSHIRE

LOCAL PARTNERSHIP DELIVERY PLAN 2014-15

Front Page with photos

Chairman's Introduction Page

"Community Safety has seen many changes over recent years, and it continues to develop with the introduction of a North Yorkshire Community Safety Partnership in 2014/15 linked closely with the commissioning work of the Police and Crime Commissioner.

"There are more changes ahead with new legislation and different working models for many of our partner organisations. However we will adapt effectively to those changes and our focus locally will remain on reducing crime; disorder and anti social behaviour for all those who live; work or visit our area. Through our Local Delivery Team, we will ensure that we can continue to enjoy a Safer Hambleton and a Safer Richmondshire."

Contents Page

What we did in 2013-14

The 2013-14 Partnership Plan identified the following priorities:

- **Anti-Social Behaviour**
- **Domestic Abuse**
- **Road Safety**
- **Community Engagement, Offender Management & Safeguarding Vulnerable Individuals and Troubled Families**

Anti-Social Behaviour

We supported a range of activities to deal with Anti-Social Behaviour throughout the year including:

- Deployment of the mobile CCTV cameras in ASB hotspots and to safeguard high risk vulnerable individuals
- Supported local initiatives such as the youth club in Stokesley, Monday night football club and Summer Youth Festivals

NOT PROTECTIVELY MARKED

NOT PROTECTIVELY MARKED

- Identified and responded to local community concerns through the monthly Multi-Agency Problem Solving Process
- Facilitated 5 anger management courses and 5 mediation sessions

Domestic Abuse

We delivered community and multi-agency training and awareness events and a series of media campaigns, whilst supporting victims and families in Hambleton and Richmondshire by:

- facilitating and supporting Multi-Agency Risk Assessment Conferences involving victims and children
- delivering Domestic Abuse Awareness and MARAC Training Courses to multi-agency practitioners including education and health sectors, accident and emergency, schools, the military etc.
- further development of the Domestic Abuse Champions Scheme for practitioners across Hambleton and Richmondshire, specifically looking at communication, legislation updates and signposting victims of abuse to appropriate agencies
- delivering an annual Media and Communications Programme which included a successful Christmas radio and press promotion, a campaign focussing on raising awareness to isolated communities in the Dales and promoting helplines innovatively on the side of the waste collection bins in Richmondshire.
- promoting the Schools Guidance on Domestic Abuse and Expect Respect Toolkit to secondary schools. This toolkit provides materials and information to understand and encourage healthy relationships.

Road Safety

We worked with partners and communities to identify speeding issues and raise awareness of road safety issues and how to be safe on the roads by:

- deploying speed monitoring and awareness equipment - encouraging safer driving through targeted education, enforcement, safe design and construction on our roads
- supporting targeted campaigns at specific sites based on statistical evidence and local concerns
- supporting education programmes in local schools and through community news and media articles
- undertaking seasonal and themed Safer Driving Campaigns including a 5 day radio campaign for Road Safety Week and a month long campaign to raise awareness of drink driving over the Christmas period.

NOT PROTECTIVELY MARKED

Community Engagement, Offender Management and Safeguarding Vulnerable Individuals and Troubled Families

We identified and responded to emerging crime patterns and trends based on data, intelligence and analysis which enabled us to:

- respond pro-actively to specific crimes and locations, including rural crime campaigns to target non-domestic burglary, theft of quad bikes/ land rovers and dark night burglary through the Light Up, Lock Up campaigns
 - deliver initiatives across Hambleton and Richmondshire including cycle marking, Crime Surgeries, shoplifting campaigns and the Night Marshalls Initiative
 - provide the community with relevant and specific information and equipment to safeguard themselves and their property - including safety checklists, personal safety alarms, window and door locks, bicycle locks and purse chains
 - Worked with the Developing Stronger [Troubled] Families team to best develop interventions that support the needs of “troubled families” in the area
-

Partnership Performance

Crime

Data from North Yorkshire Police Crime Analysts informs us that crime across the Hambleton and Richmondshire area increased slightly by 99 crimes between 2012/13 and 2013/14 [1 April to 31 December data only] with 3357 crimes being recorded up to 31 December 2013.

The three highest crime types by volume are non-domestic burglary, shoplifting and violence against the person. There have, however, been good reductions in theft of or unauthorised taking of a vehicle, theft from a person, criminal damage and domestic burglary.

Crime distribution is concentrated, primarily, within the towns, offence levels are driven primarily, by sporadic offender behaviour rather than regular seasonality although the good weather experienced during summer 2013 did see recorded crime increase above anticipated levels.

There have been considerable reductions in recorded crime levels since during the remainder of the year which has meant that, whilst crime has increased slightly, overall levels remain lower than in 2011/12.

Rural crime impacts on employment, business viability and links into social isolation. Local farming communities are being affected by theft, vehicle crime and burglary other.

Anti Social Behaviour

There have been significant decreases in recorded anti-social behaviour since 2011 and the levels have continued to reduce considerably in 2013/14.

Data from North Yorkshire Police Crime Analysts informs us that anti-social behaviour across the Hambleton and Richmondshire area decreased by 425 incidents between 2012/13 and 2013/14 [1 April to 31 December data only] with 3065 incidents being recorded up to 31 December 2013.

Alcohol and Substance Misuse

Alcohol continues to remain a causation factor linked to criminal damage, youth ASB, domestic violence and violence in the night time economy. Data has revealed that Richmondshire has one of the highest proportion of offences which are linked to the consumption or misuse of alcohol in York and North Yorkshire whereas Hambleton has the lowest.

Hambleton also has one of the lowest percentage of anti-social behaviour incidents which are linked to the consumption or misuse of alcohol, and Richmondshire has a mean percentage.

Drug misuse within Hambleton and Richmondshire is significantly lower than the average for England; drug offences continue to be low with possession of cannabis being the most frequent crime identified.

Domestic Abuse

Since 2011/12, incidents of domestic abuse reported to North Yorkshire Police have increased by 9% raising from 9,270 in 2011/12 to 10,066 in 2013/14. For the Hambleton area, since 2011/12, there has been a 14% increase in the number of cases reported, an increase of 113 (from 781 to 894). Richmondshire saw a decrease of 7% for the same period from 455 to 421. Month by month analysis shows no identifiable trends.

Whilst the overall increase in the numbers can seem alarming it does show the success and effectiveness of partnership working and awareness raising - breaking down barriers so individuals have the confidence in reporting incidents of domestic abuse.

During 2013/14, there has been a focus on raising awareness of Multi Agency Risk Assessment Conferences (MARACs) and risk assessment procedures with partnership agencies. This has resulted in great identification of high risk cases being reported to MARAC. The MARAC process allows vital information to be shared between agencies to ensure safety plans are in place for victims and their families.

During 2013, changes in legislation have also had an impact on domestic abuse including the inclusion of 16/17 year olds in the definition of domestic abuse, changes to legal aid and changes to housing benefit rules.

Road Safety

Collision data shows for January to June 2013 compared to 2012, that fatalities tripled in the Hambleton area (from 1 to 3) compared to a significant reduction in Richmondshire (from 3 to 0).

The data also shows that serious injuries halved in the Hambleton area (from 54 to 27) whilst they remained static in Richmondshire at 24.

Road deaths and injuries are significantly higher than the average for England with those killed or seriously injured not being resident in the area – reflecting the presence of the A1(M), A19, A684 and other key arterial routes running through it.

The Joint Strategic Intelligence Assessment

Context

There is a statutory responsibility to produce a Joint Strategic Intelligence Assessment; the “Service Strategic Assessment” (SSA) on an annual basis in order to review crime, disorder, re-offending and substance misuse issues and determine which areas should be priorities for the forth coming year.

It is an important partnership document to ensure a commitment to working together effectively. The anticipated outcomes are for medium to longer-term crime reduction, by developing joint strategies and initiatives for protecting the residents of Hambleton and Richmondshire.

Key Information

Both Hambleton and Richmondshire are predominantly rural areas with key market towns within the area. Many ASB incidents and recorded crimes are concentrated in and around the market towns, but there is also a degree of rural crime which takes place including highly impactful theft of farm machinery.

Tourism is an important factor to the local economy and this will be even more prevalent during summer 2014 when the area will play host to a significant section of the Tour de France route.

The area is also home to the largest Garrison in Europe at Catterick as well as other military locations such as Alanbrooke Barracks and RAF Leeming. The Garrison will be greatly expanded over the next 18 months with 4000 new homes, leisure facilities and a new town centre which will increase employment opportunities but also increase the number of families living in the area.

The levels of deprivation, long term unemployment and children living in poverty within the area are all significantly lower than elsewhere in the country although statutory homelessness is worse than the national average.

Richmondshire has the highest house prices to earnings ratio in North Yorkshire which makes affordability to purchase a property an issue, and significant changes have taken place for some of the major employers within the Northallerton area with the closure of the HMP Northallerton and the Rural Payments Agency and further budget savings within North Yorkshire County Council will also have an impact as it is a major local employer.

**Priorities and Actions for
2014 - 2015**

Anti-social Behaviour and Quality of Life

We aim to continue reducing ASB and improve quality of life in the next year by:

- tackling crime and anti-social behaviour in our priority wards most notably Stokesley in Hambleton and Colburn/Hipswell in Richmondshire
- identifying and supporting vulnerable and repeat victims of crime/ASB by embedding the multi-agency Vulnerability Risk Assessment process to ensure intelligence led responses and resolutions
- identifying and responding to local community concerns and location hotspots through the Multi-Agency Problem Solving (MAPS) process
- protecting and educating vulnerable children and young people of the risks related to and from anti-social behaviour, alcohol misuse, sexual crime or sexual exploitation, through intervention or diversionary activities as well as promoting community cohesion amongst peers
- improving partner knowledge on ASB, Hate Crime, Violent Extremism and Substance Misuse through training and awareness events, and raising public awareness through targeted multi-agency campaigns or educational videos
- pro-active licensing enforcement and deploying mobile CCTV cameras at hotspot locations
- develop processes to work within the new Anti-Social Behaviour, Crime and Policing Act which will see a range of new powers and tools to further reduce and prevent ASB

Domestic Abuse

We aim to reduce repeat victimisation and increase the reporting of Domestic Abuse by:

- Delivering training and awareness workshops and courses to both practitioners and victims across Hambleton and Richmondshire
- Using the Expect Respect Toolkit promoting healthy relationships to secondary schools
- Focussing on hard to reach and minority groups across the districts ensuring availability of information to all members of the community
- Providing safety advice and support to all victims who report domestic abuse

NOT PROTECTIVELY MARKED

- Continuing to work with Domestic Abuse Champions increasing their understanding of the risks faced by victims and where they can go for help
- Supporting and promoting local initiatives that work with victims and their families helping them to move on from domestic abuse.
- Developing and promoting the Making Safe Scheme providing support for victims and perpetrators
- Supporting the new legislation; Domestic Violence Disclosure Scheme (often referred to as Clare's Law), to enable individuals to request background information about partners if they suspect that they have committed domestic abuse in the past.

Road Safety

We aim to reduce the number of slight accidents and people killed or seriously injured on our roads by:

- raising awareness of road safety issues through education in schools and supporting targeted campaigns at specific sites or within communities based on statistical evidence and local concerns including elderly drivers, cyclists and motorcyclists
- working with partners to identify speeding issues through the deployment of monitoring and awareness equipment
- encouraging safer driving and better driver behaviour through targeted enforcement, safe design and construction of our roads.

Community Engagement, Offender Management, Safeguarding Vulnerable Individuals and Troubled Families

We will continue to use a multi-agency approach for both offender management and safeguarding vulnerable individuals and troubled families by:

- working with the Developing Stronger [Troubled] Families central team and case workers to provide bespoke interventions and plans for families with the greatest needs
- identifying support and target hardening measures for repeat and vulnerable victims of all crime, including hate crime and domestic violence
- supporting the management and administration of all watch schemes within Hambleton and Richmondshire
- providing Workshop to Raise Awareness of Prevent (WRAP) training and awareness courses for practitioners and members of the public to enable them to recognise signs of radicalisation of an individual and how to report or support individuals at risk

NOT PROTECTIVELY MARKED

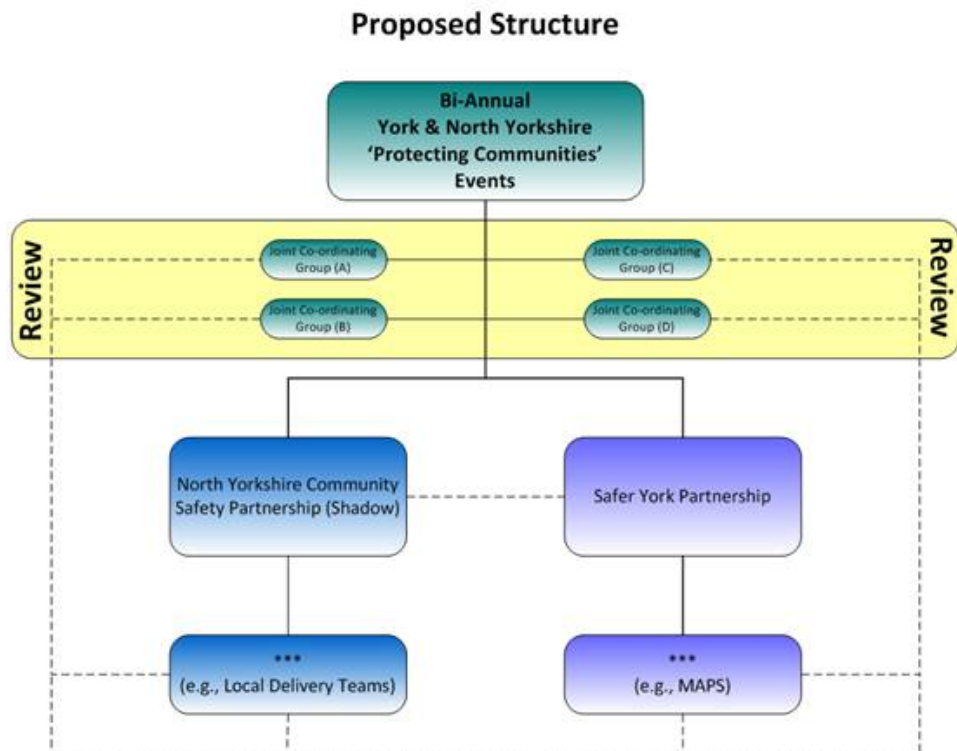
- Work within and support the changing landscape of offender management with the creation of the Community Rehabilitation Company and the National Probation Service from 1 Oct 2014
- Ensure communities and practitioners understand the changes arising from the Anti-Social Behaviour, Crime and Policing Act 2014 and the new tools and powers that organisations are able to use to deal with anti social behaviour.

Strategic Community Safety Landscape

In line with reduced budgets and In order to streamline processes for delivering community safety in North Yorkshire and the City of York, a new North Yorkshire Community Safety Partnership will be introduced in 2014.

This Partnership will be a collective of the local Delivery Teams and will look strategically at the issues faced by communities within the policing area. In addition to the North Yorkshire Community Safety Partnership there will also be bi-annual events hosted by the Police and Crime Commissioner for North Yorkshire which focuses on particular emerging themes or issues.

The below diagram shows the new landscape; Safer Hambleton and Richmondshire will be a Local Delivery Team:



Funding

Financial support has significantly reduced in recent years for local delivery as budgets have been streamlined and there is no longer any central government funding available. However, the Local Delivery Team has received funding from the Police and Crime Commissioner to continue to deliver this plan until 30 September 2014.

Further funding for the period October 2014 until April 2016 will be subject to a commissioning framework put in place by the Police and Crime Commissioner through the North Yorkshire Community Safety Partnership or from our partner organisations.

List of Partners

Hambleton District Council

Richmondshire District Council

National Probation Service/ Community Rehabilitative Company

North Yorkshire County Council

North Yorkshire Fire and Rescue Service

North Yorkshire Police

Hambleton, Richmondshire and Whitby Clinical Commissioning Group

Office of Police and Crime Commissioner

North York Moors National Park Authority

Housing Associations such as Broadacres, Muir Housing, Endeavour, Foundation and Accent

Northallerton and District Voluntary Service Association

Richmondshire Community and Voluntary Action

North Yorkshire Youth Justice Service

Environment Agency

British Transport Police

Ministry Of Defence

York and North Yorkshire Neighbourhood Watch Association.

Action Plans

- Anti-Social Behaviour and Quality of Life

NOT PROTECTIVELY MARKED

- Domestic Abuse
- Road Safety
- Crime and Offender

Contact information on the back

NOT PROTECTIVELY MARKED



ANTI SOCIAL BEHAVIOUR ACTION PLAN 2014/15

ACTION	LEAD AGENCY	HOW	BY DATE	PROGRESS			
				Q1	Q2	Q3	Q4
Anti-Social Behaviour, Crime and Policing Act							
<ul style="list-style-type: none"> Lead the introduction of the new legislation 	Community Safety Team	Development grp Working groups Briefing notes/Reports	October 2014				
<ul style="list-style-type: none"> Facilitate and attend training sessions on the new legislation 	Community Safety team/ ALL partners		October 2014				
<ul style="list-style-type: none"> Monitor and evaluate use of new powers once implemented 	ALL partners (relevant to the power)		April 2015				
				Q1	Q2	Q3	Q4
Multi-Agency Problem Solving (MAPS)							
<ul style="list-style-type: none"> Support the monthly MAPS meetings – identifying individuals of concerns and ASB hotspots for multi-agency action 	ALL partners	Attendance at, and engagement in the MAPS process	Ongoing				
<ul style="list-style-type: none"> Incorporation of new ASB powers, tools and local accountability mechanisms (Community Trigger) 	ALL partners	Adaption of the new agenda	From October 2014				
<ul style="list-style-type: none"> Establish task and finish groups as appropriate to tackle hotspots; responding to tactical issues, local community concerns and trends 	Community Safety Team/ Partners as appropriate	Task and finish groups Action plans	As required				
<ul style="list-style-type: none"> Utilise vulnerability assessments to determine most appropriate action for individuals needs 	ALL partners		Ongoing				
<ul style="list-style-type: none"> Protecting and educating vulnerable children and young people of the risks associated with their behaviour 	ALL partners	Intervention or diversionary activities Promoting community cohesion through peers Social Media Crucial Crew	Ongoing				

				Q1	Q2	Q3	Q4
Alcohol and Substance Misuse							
<ul style="list-style-type: none"> Support initiatives to reduce alcohol misuse such as the AlcoBlow equipment or other initiatives such as stickers on bottles to identify where purchases have been made 	NYP	Media releases Nights of action					
<ul style="list-style-type: none"> Promote no drinking zones throughout the summer period; evaluating the use of the zones for the new Public Spaces Protection Orders 	Community Safety Team / NYP	Media releases					
<ul style="list-style-type: none"> Work with Compass and HARCAS to support individuals with drug or alcohol dependencies – increasing referrals in to the service 	ALL partners	Referral mechanisms promoted					
<ul style="list-style-type: none"> Monitoring of s27 direction to leave (new dispersal powers when in place) and circumstances (evaluating link between young people, drugs and alcohol) 	NYP / Community Safety Team						
<ul style="list-style-type: none"> Support national alcohol awareness campaigns 	Community Safety Team						
				Q1	Q2	Q3	Q4
Work with the Early Interventions Team on the Developing Stronger Families programme across the Hambleton and Richmondshire areas							
Page 14	Increase awareness of referral processes	Community Safety Team / DSF team		Ongoing			
	Maintain overview of work being undertaken with identified families	Community Safety Team / partners as appropriate	Operational work sheet	Ongoing			
	<ul style="list-style-type: none"> Provide the DSF team with up to date information on all Open / Unallocated cases on a monthly basis through the Community Safety Team 	ALL partners	Operational work sheet	Ongoing			
	<ul style="list-style-type: none"> Link in with the Caseworkers for any additional support or interventions required 	Partners as appropriate	Allocation meetings	Ongoing			
				Q1	Q2	Q3	Q4
Identify any emerging trends or points of interest for partners							
<ul style="list-style-type: none"> Hold training sessions / develop briefings as appropriate 	ALL partners	Training sessions Briefings	As required				
				Q1	Q2	Q3	Q4
Communications							
<ul style="list-style-type: none"> Deliver Communications appropriately throughout the year according to routine matters and ad hoc issues that arise 	ALL partners	All appropriate media channels					

NOT PROTECTIVELY MARKED



**Hambleton and Richmondshire Domestic Abuse Forum
Local Delivery Plan 2014-15**

Domestic Abuse Performance Data 2014-15		Hambleton				Richmondshire			
		Q1	Q2	Q3	Q4	Q1	Q2	Q3	Q4
Police	Domestic incidents								
	Repeats								
	% repeats								
IDVA	Referrals								
	Caseload								
IDAS	Referrals to outreach								
Making Safe	Referrals								
	Live cases								
MARAC	Referrals - Police								
	Referrals - other								
	Of which Repeats								

NOT PROTECTIVELY MARKED



**Hambleton and Richmondshire Domestic Abuse Forum
Local Delivery Plan 2014-15**

JCG Objective 1 - To provide services committed to early intervention and prevention of domestic abuse for adults, children and young people.

Action	Lead	Progress (RAG)			
		Q1	Q2	Q3	Q4
1. Improve and promote understanding of legislation and guidance.					
2. Deliver guidance and procedures for vulnerable adults who are victims of domestic abuse.					
3. Develop local guidance to increase awareness and referrals.					

JCG Objective 2 - To support children and young people who are affected by domestic abuse.

Action	Lead	Progress (RAG)			
		Q1	Q2	Q3	Q4
1. Promote schools guidance and Expect Respect within secondary schools					
2. Promote Respect Young Persons Programme to all agencies					



**Hambleton and Richmondshire Domestic Abuse Forum
Local Delivery Plan 2014-15**

3.	Recognise and target engagement with children's homes, residential schools, youth offending teams, foster carers etc.					
4.	Consider raising awareness of healthy relationships through the use of social networking sites.					

JCG Objective 3 - To improve the safety of victims who experience domestic abuse and support them in rebuilding their lives.

Page 17

	Action	Lead	Progress (RAG)			
			Q1	Q2	Q3	Q4
1.	Ensure coordination and commitment to the MARAC process with local partner agencies					
2.	Deliver recommendations from CAADA self-assessments					
3.	Support and promote local initiatives to help victims i.e. IDVAs, Freedom, Programme etc					
4.	CAADA recommendations to be embedded within the MARAC processes and protocol.					
5.	Raise awareness of Honour Based Violence/Forced Marriage/FGM					
6.	Develop stronger links with military and medical professions					



**Hambleton and Richmondshire Domestic Abuse Forum
Local Delivery Plan 2014-15**

JCG Objective 4 - To provide interventions for perpetrators to reduce offending.

Action	Lead	Progress (RAG)			
		Q1	Q2	Q3	Q4
1. Ensure DA Perpetrators received appropriate intervention through statutory services and Making Safe					
2. Increase referrals to Making Safe through evaluation of scheme and raising awareness.					
3. Support and promote initiatives working with ex offenders helping them integrate positively into society.					
4. Increase awareness and understanding of the Disclosure Scheme, Right to Ask, Right to Know					



**Hambleton and Richmondshire Domestic Abuse Forum
Local Delivery Plan 2014-15**

JCG Objective 5- To deliver equitable, coordinated and consistent services with committed funding through effective partnership working.

Action		Lead	Progress (RAG)			
			Q1	Q2	Q3	
1.	Deliver awareness raising campaigns i.e. Christmas and World Cup 2014					
2.	Organise bespoke and generic awareness raising with partner agencies					
3.	Continue to develop and maintain DA Champions Scheme					
4.	Analyse Domestic Abuse Data allowing consistent reporting to partnership agencies					

ROAD SAFETY ACTION PLAN 2014/15


Targets:

- Reduce the number of people killed and seriously injured on our roads
- Reduce the number of slight accidents

ACTION	LEAD OFFICER / AGENCY	HOW	BY WHEN / DATE	PROGRESS			
				Q1	Q2	Q3	Q4
MATRIX WORK							
• Deployment of the Data Logger	NY Fire / NYCC / NY Police		Ongoing				
• Deployment of the Flashing Matrix	NY Fire / NYCC / NY Police		Ongoing				
CYCLES / TOUR DE FRANCE LEGACY							
• Safe Cycle Routes for Families			Ongoing				
MOTORCYCLES							
• Education Awareness	NY Fire / NYCC / NY Police		Ongoing				

ACTION	LEAD OFFICER / AGENCY	HOW	BY WHEN / DATE	PROGRESS			
				Q1	Q2	Q3	Q4
COMMUNICATIONS							
<ul style="list-style-type: none"> • UK Road Safety Week 2014 (www.roadsafetygb.org.uk) – theme for the week is 'Be Safe Out There' link to: <ul style="list-style-type: none"> ○ Summer Drink Drive ○ Tour De France Cycle Safety 	NY Fire / NYCC / NY Police	Radio Campaign Leaflets	9-15 June 2014				
<ul style="list-style-type: none"> • Road Safety Week 2014 (www.brake.org.uk) link to: <ul style="list-style-type: none"> ○ Winter Drink Drive 	NY Fire / NYCC / NY Police	Radio Campaign Leaflets	17-23 Nov 2014				
<ul style="list-style-type: none"> • Summer Drink Drive Campaign – in conjunction with UK Road Safety Week (9-15 June) 	NY Fire / NYCC / NY Police	Radio Campaign Leaflets					
<ul style="list-style-type: none"> • Winter Drink Drive Campaign – in conjunction with Road Safety Week (17-23 Nov) 	NY Fire / NYCC / NY Police	Radio Campaign Leaflets					
<ul style="list-style-type: none"> • Winter Driving Awareness Campaign 	NY Fire / NYCC / NY Police	Education / Leaflets					
<ul style="list-style-type: none"> • School Based Education Awareness, including Cycle Safety 	NYCC (Kevin Pratt)	Education / Leaflets	Ongoing				
<ul style="list-style-type: none"> • Older Drivers Education Awareness 	NYCC (Kevin Pratt)	Education / Leaflets	Ongoing				
<ul style="list-style-type: none"> • Young Drivers Education Awareness 	NYCC (Kevin Pratt)	Education / Leaflets	Ongoing				

CRIME & OFFENDER MANAGEMENT ACTION PLAN 2014/15



ACTION	LEAD OFFICER / AGENCY	HOW	BY WHEN / DATE	PROGRESS			
				Q1	Q2	Q3	Q4
ENGAGEMENT WITH RURAL & ELDERLY VICTIMS & THOSE LIKELY TO BECOME VICTIMS							
Page 23 <ul style="list-style-type: none"> Use various media mechanisms to engage with the community 	Age UK / NYCC Trading Standards / NYP / Community Safety Team / Neighbourhood Watch Schemes	EngAge Events Newsletters Face to Face Visits Radio broadcasts Press releases	Ongoing				
<ul style="list-style-type: none"> Respond to tactical crime tasking objectives 	as above	As appropriate	Ongoing				
<ul style="list-style-type: none"> Provide target hardening to support vulnerable victims 	as above		Ongoing				
TACKLE CROSS BORDER CRIME							
<ul style="list-style-type: none"> Use ringmaster to advise and feedback issues of concern to watch schemes 	NYP / Watch Schemes		Ongoing				
<ul style="list-style-type: none"> Support schemes where appropriate & operational cross border initiatives 	NYP / Watch Schemes		Ongoing				

ACTION	LEAD OFFICER / AGENCY	HOW	BY WHEN / DATE	PROGRESS			
				Q1	Q2	Q3	Q4
TOUR DE FRANCE (specific action 2014)							
<ul style="list-style-type: none"> Link to broader cycling magazines regarding crime messages 	TDF14 / Welcome To Yorkshire		July 2014				
<ul style="list-style-type: none"> Prepare crime prevention leaflet 	Community Safety Team		Completed				
<ul style="list-style-type: none"> Bluetooth message system over TdF weekend 	NYCC Trading Standards		July 2014				
<ul style="list-style-type: none"> Safety banners at key locations 	NYFRS		July 2014				
PREVENT & COMMUNITY TENSIONS							
page 24 Integrate prevent awareness at local organisational level via Workshop to Raise Awareness of Prevent (WRAP) & Op Fairway training	Community Safety Team / ALL Partners		Ongoing				
<ul style="list-style-type: none"> Collate & disseminate appropriate Prevent information 	ALL Partners		Ongoing				
<ul style="list-style-type: none"> Support via Multi-Agency Problem Solving (MAPS) Individuals of Concern 	ALL Partners		Ongoing				
<ul style="list-style-type: none"> Identify, collate and monitor community tensions to inform the Counter Terrorism Local Plan (CTLP) 	ALL Partners		Ongoing				
OFFENDERS							
<ul style="list-style-type: none"> Establish links to the new Community Rehabilitation Companies and National Probation Service to ensure local Integrated Offender Management (IOM) continues 	NYP/ Community Safety team/ National Probation Service/ CRCs		October 2014				

HAMBLETON DISTRICT COUNCIL

Report To: Scrutiny Committee
10 July 2014

From: Chairman of Scrutiny Committee

Subject: **POLICY REVIEW WORK PROGRAMME 2014/15**

All Wards

1.0 SUMMARY:

1.1 The purpose of this report is to provide further information in relation to the Committee's ideals for the policy review work for 2014/15.

2.0 BACKGROUND:

2.1 It is in the Council's Constitution that as a guideline the Council's Scrutiny Committee should undertake two policy reviews each year. However as in recent years it is suggested that only one topic for review be identified initially and that the position with regard to further reviews be considered mid year.

2.2 It is now necessary for review topics for 2014/15 to be determined. In considering topics for review the Committee is asked to consider the Council's Business Plan Priority Themes which are as follows:

Customer Services and Asset Management

- To put our customers first and provide high quality, value for money services that meet the needs of our communities.
- Encouraging our residents to become more involved in making decisions and delivering services which impact on their local communities.
- Improving the performance and productivity of our services.

Housing, Planning and Waste Management

- To minimise the impact of waste on the environment by increasing the amount of household waste that is recycled.
- To meet the housing needs of all sections of the local community by providing an adequate amount and range of housing, including affordable housing.
- To ensure that the Planning Service supports the sustainable economic growth and development of the District.
- To prevent homelessness by providing direct support to District residents in need.

Leisure and Health

- Promote healthy lifestyles by promoting Council leisure facilities so that more people are participating in physical activity and who feel they are in good health.
- Supporting the community to participate in sport and active recreation.

Support Services and Economic Development

- Provide financial sustainability.
- Minimise the impact to the Council and community of the changes to Welfare Reform.
- To implement the Local tax scheme and ensuring all properties are taxed to minimise impact to the community and Council.
- To support local economic growth.

3.0 RECOMMENDATION:

- 3.1 It is recommended that the Committee identifies and agrees a suitable topic for a policy review for 2014/15.

COUNCILLOR A WAKE

Background papers: None
Author ref: LAH
Contact: Louise Hancock
Committee Officer
Direct Line No: (01609) 767015

050614 work programme